

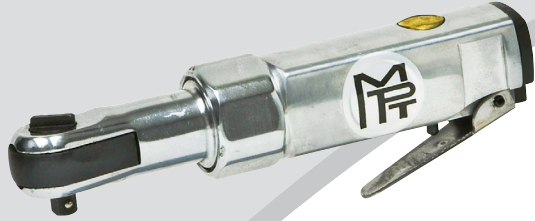


# ***Ratchets & Impact Wrenches***

Herb Nab waits to change tires, with lug nuts ready in his teeth.  
(Photo: ISC Archives via Getty Images)

**Call Today to Order • 800-521-8104**





### MP-2760C-ST

#### 1/4" Square Drive Power Ratchet

Versatility that combines speed with power. Uses include small engine repairs, water pumps, radiators and air conditioning units. Ideal for use in limited work areas. SH-0719RA 1/4" replacement ratchet head assembly available.

Drive	Max Torque	Length	Weight	Air Inlet Thread	Rec'd Hose Size	Avg. Air Consumption
1/4" Ball-Type	18 ft-lbs	6-5/16"	1.1 lb	1/4"	3/8"	3 cfm



### MP-1632K-ST

#### Multi-Function "Mini" Ratchet and Driver Kit

Features a composite motor housing, invertible 1/4" sq. dr. to 3/8" sq. dr. anvil and replaceable 1/4" hex screwdriver insert with 5 popular size bits. Rear exhaust and a slim compact head design make for a lightweight, yet powerful, solution for the operator.



1/4" Sq. Dr.



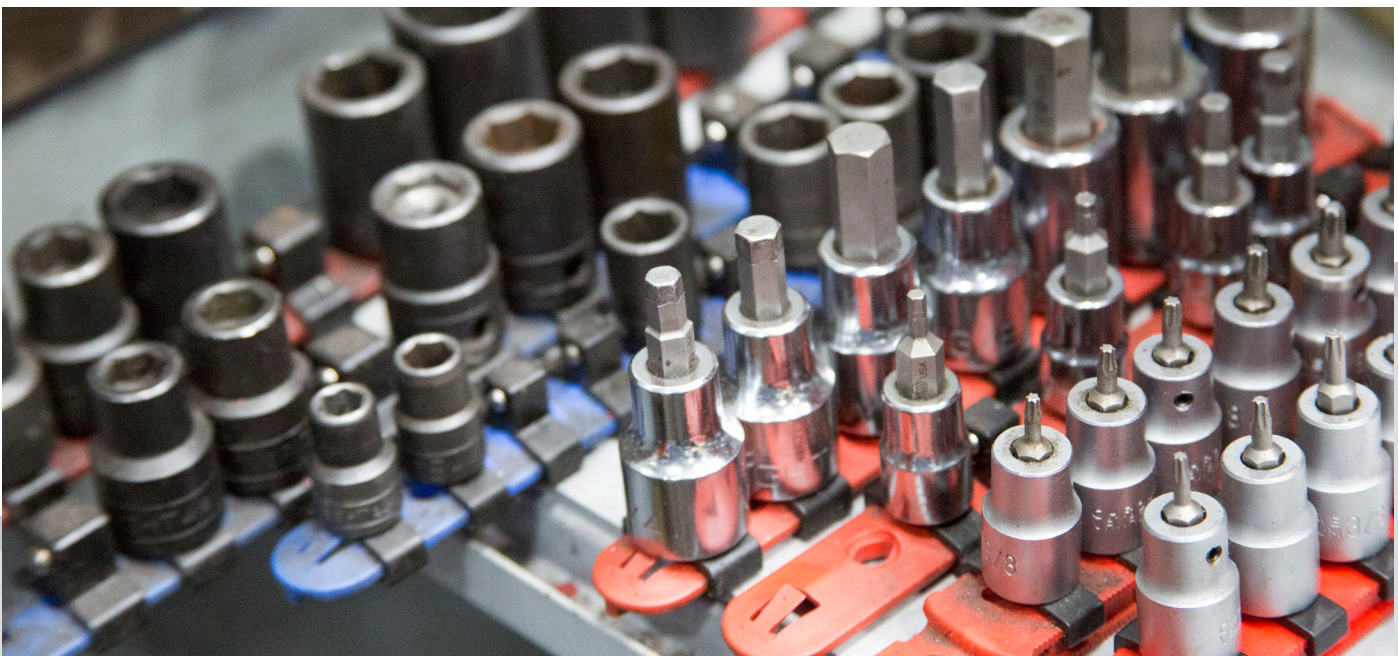
3/8" Sq. Dr.



1/4" Hex Dr.



Drive	Max Torque	Length	Weight	Air Inlet Thread	Rec'd Hose Size	Avg. Air Consumption
1/4" and 3/8" Ball-Type, 1/4" Hex	30 ft-lbs	6-1/8"	1.1 lbs	1/4"	3/8"	4 cfm





### MP-7131-ST

#### 3/8" Square Drive Reversible Impact Ratchet

This ratchet features a dual hammer pin impact mechanism designed to deliver a smooth blow to the ratchet yoke. Ideal for small engines and restricted work areas.

Drive	Max Torque	Length	Weight	Air Inlet Thread	Rec'd Hose Size	Avg. Air Consumption
3/8" Ball-Type	90 ft-lbs	11"	2.82 lbs	1/4"	3/8"	4 cfm



### MP-7132-ST

#### 1/2" Square Drive Reversible Impact Ratchet

This ratchet features a dual hammer pin impact mechanism designed to deliver a smooth blow to the ratchet yoke. Ideal for small engines and restricted work areas.

Drive	Max Torque	Length	Weight	Air Inlet Thread	Rec'd Hose Size	Avg. Air Consumption
1/2" Ball-Type	90 ft-lbs	11"	2.82 lbs	1/4"	3/8"	4 cfm



### MP-728-ST

#### 3/8" Square Drive Reversible Ratchet

Versatility that combines speed with power. Uses include engine repairs, water pumps, radiators and air conditioning units. Ideal for use in limited work areas. SH-30RA 3/8" replacement ratchet head assembly available.

Drive	Max Torque	Length	Weight	Air Inlet Thread	Rec'd Hose Size	Avg. Air Consumption
3/8" Ball-Type	50 ft-lbs	10-3/8"	2.5 lbs	1/4"	3/8"	4 cfm



### MP-1625-ST

#### 1/2" Square Drive Reversible Ratchet

Versatility that combines speed with power. Uses include small engine repairs, water pumps, radiators and air conditioning units. Ideal for use in limited work areas. SH-735RA 1/2" replacement ratchet head assembly available.

Drive	Max Torque	Length	Weight	Air Inlet Thread	Rec'd Hose Size	Avg. Air Consumption
1/2" Ball-Type	90 ft-lbs	14-3/8"	4.4 lbs	1/4"	3/8"	5 cfm



### MP-135-ST

#### 3/8" Square Drive Impact Wrench

Features a built-in regulator for positive speed and torque control and a friction ring retainer for quick socket changing. The single-handed through-bolt-action fwd/rev mechanism is easy to operate.

Drive	Max Torque	Length	Weight	Air Inlet Thread	Rec'd Hose Size	Avg. Air Consumption
3/8" Friction Ring	75 ft-lbs	5-5/16"	2 lbs	1/4"	3/8"	3 cfm



### MP-212-PT

#### 3/8" Square Drive Pin-Type Impact Wrench

Features a pin-type anvil to help ensure socket retention. Durable and lightweight with aluminum housing and high-torque jumbo hammer mechanism to ensure long life. Perfect for industrial applications, assembly lines, repair shops and garages—a technician's true best friend.

Drive	Max Torque	Length	Weight	Air Inlet Thread	Rec'd Hose Size	Avg. Air Consumption
3/8" Pin-Type	200 ft-lbs	5-1/2"	2.98 lbs	1/4"	3/8"	2.5 cfm



### MP-720-ST

#### 3/8" Square Drive Impact Wrench

Features a friction ring retainer for quick socket changing. This rugged, lightweight and compact impact is easily maneuvered in hard-to-access areas. Equipped with swivel air inlet, built-in regulator for increased control, and a rubber bumper clutch guard. The butterfly trigger allows for easy fwd/rev operation.

Drive	Max Torque	Length	Weight	Air Inlet Thread	Rec'd Hose Size	Avg. Air Consumption
3/8" Friction Ring	75 ft-lbs	5-7/8"	2 lbs	1/4"	3/8"	3 cfm



MP-1241P-ST

### 1240 Series

#### 3/8" & 1/2" Square Drive Impact Wrenches

Features a friction ring anvil for quick socket changing and a twin hammer clutch for power and durability. Features single-handed push-button fwd/rev and built-in power regulator.

Model	Drive	Max Torque	Length	Weight	Air Inlet Thread	Rec'd Hose Size	Avg. Air Consumption
MP-1241P-ST	3/8" Friction Ring	430 ft-lbs	6"	2.6 lbs	1/4"	3/8"	4 cfm
MP-1243P-ST	1/2" Friction Ring	430 ft-lbs	6"	2.6 lbs	1/4"	3/8"	4 cfm





### MP-7775

#### 1/2" Square Drive Stubby Impact Wrench

Extremely compact design for access in tight or hard-to-reach areas. Features a lightweight composite motor housing, friction ring anvil and single-handed fwd/rev lever. Ideal for use in maintenance and repair shops and garages.

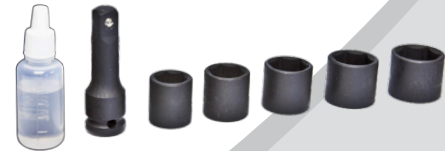
Drive	Max Torque	Max Torque Reverse	Length	Weight	Air Inlet Thread	Rec'd Hose Size	Avg. Air Consumption
1/2" Friction Ring	500 ft-lbs	940 ft-lbs	3-7/8"	2.5 lbs	1/4"	3/8"	5.8 cfm



### MP-4311K-HT-KIT

#### 1/2" Square Drive Stubby Impact Wrench Kit

Features a high torque output in a super compact design for access in confined or hard-to-reach areas. Aluminum housing and steel hammer case provide exceptional durability. Excellent weight and balance to reduce operator fatigue. A must for auto, diesel and aircraft mechanics. Kit includes case, five sockets (17, 19, 21, 22, and 24mm), 2" extension and air tool oil.



Drive	Max Torque	Length	Weight	Air Inlet Thread	Rec'd Hose Size	Avg. Air Consumption
1/2" Friction Ring	400 ft-lbs	5"	3 lbs	1/4"	3/8"	6 cfm



### MP-4314

#### 1/2" Square Drive Composite Impact Wrench

Features a lightweight, durable composite housing and aluminum hammer case. Single-handed push-button fwd/rev operation and friction ring anvil for easy socket changing. Ideal for mechanics in all industries.

Drive	Max Torque	Length	Weight	Air Inlet Thread	Rec'd Hose Size	Avg. Air Consumption
1/2" Friction Ring	820 ft-lbs	7-3/8"	4.21 lbs	1/4"	3/8"	4 cfm



# VENOM

SERIES IMPACTS

## MPT “Venom Series” Impact Wrenches

The latest addition to the MPT product line. Venom Impact Wrenches features: lightweight composite handles, durable aluminum housings, twin and jumbo hammer impact clutches, and convenient one-hand fwd/rev mechanisms. Muffled exhaust system for quiet operation and operator comfort. Ideal for professional mechanics, assembly, dismantling, industrial applications, rental, petrochemical and heavy industry applications.



MP-2142QR



MP-1437RA



MP-1350RA



MP-1450RA

Model	Style	Drive	Max Torque	Length	Weight	Air Inlet Thread	Rec'd Hose Size	Avg. Air Consumption
MP-2142QR	Pistol	3/8" Friction Ring	400 ft-lbs	6"	2.69 lbs	1/4"	3/8"	5.9 cfm
MP-1437RA	Angle	3/8" Friction Ring	180 ft-lbs	13-3/8"	3.9 lbs	1/4"	3/8"	5.0 cfm
MP-1350RA	Angle	1/2" Friction Ring	300 ft-lbs	9-3/4"	3.0 lbs	1/4"	3/8"	4.2 cfm
MP-1450RA	Angle	1/2" Friction Ring	180 ft-lbs	13-3/8"	3.9 lbs	1/4"	3/8"	5.0 cfm



Impact Wrenches - Venom Series





## MPT "Venom Series" Impact Wrenches

MPT Venom Impacts are available in 3/8", 1/2", 3/4" and 1" anvil configurations, as well as some pin-type and extended anvils.



MP-2144QR



MP-2144QR-P



MP-2144QR-2



MP-2146QR

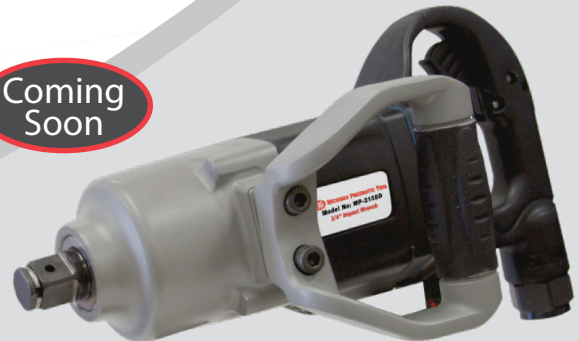


MP-2148QR



MP-2146QR-6

Coming  
Soon



MP-2158D

Model	Style	Drive	Max Torque	Length	Weight	Air Inlet Thread	Rec'd Hose Size	Avg. Air Consumption
MP-2144QR	Pistol	1/2" Friction Ring	900 ft-lbs	7-3/4"	5.0 lbs	1/4"	3/8"	6.7 cfm
MP-2144QR-P	Pistol	1/2" Pin-Type	900 ft-lbs	7-3/4"	5.0 lbs	1/4"	3/8"	6.7 cfm
MP-2144QR-2	Pistol	1/2" Friction Ring with 2" Extension	900 ft-lbs	9-3/4"	5.0 lbs	1/4"	3/8"	6.7 cfm
MP-2146QR	Pistol	3/4" Dual Retainer	1300 ft-lbs	8-11/16"	8.2 lbs	3/8"	1/2"	7.3 cfm
MP-2146QR-6	Pistol	3/4" Dual Retainer with 6" Extension	1300 ft-lbs	14-11/16"	9.0 lbs	3/8"	1/2"	7.3 cfm
MP-2158D	Straight	3/4" Dual Retainer	1600 ft-lbs	12-1/2"	12.57 lbs	1/2"	3/4"	8.7 cfm
MP-2148QR	Pistol	1" Dual Retainer	1400 ft-lbs	8-7/8"	8.42 lbs	3/8"	1/2"	7.3 cfm

Call Today to Order • 800-521-8104

7-7



MP-1700

## 1700 Series

### 1/2" Square Drive Impact Wrenches

Features a powerful twin hammer clutch, a pressure-fed lubrication system, durable steel hammer case, two-piece aluminum motor housing for easy maintenance, integrated muffler for low noise, and direct drive for fast run down.



MP-1700PA  
Pin-Type



MP-1700P2  
2" Extension

Model	Drive	Max Torque	Length	Weight	Air Inlet Thread	Rec'd Hose Size	Avg. Air Consumption
MP-1700	1/2" Friction Ring	37-370 ft-lbs	7"	5.3 lbs	1/4"	3/8"	6 cfm
MP-1700PA	1/2" Pin-Type	37-370 ft-lbs	7"	5.3 lbs	1/4"	3/8"	6 cfm
MP-1700P2	1/2" Friction Ring with 2" Extension	37-370 ft-lbs	9"	5.6 lbs	1/4"	3/8"	6 cfm



MP-2315-HE

## 2315 Series

### 1/2" Square Drive Impact Wrenches

Features ergonomic rubber grip. The durable twin hammer clutch offers long, dependable service. Ideal for general maintenance and repair operations.



MP-2315-HE-716  
7/16" Quick Change



MP-2315-HE-2  
2" Extension

Model	Drive	Max Torque	Length	Weight	Air Inlet Thread	Rec'd Hose Size	Avg. Air Consumption
MP-2315-HE	1/2" Friction Ring	680 ft-lbs	7-1/4"	5.8 lbs	1/4"	3/8"	4.2 cfm
MP-2315-HE-2	1/2" Friction Ring with 2" Extension	680 ft-lbs	9-1/4"	6.1 lbs	1/4"	3/8"	4.2 cfm
MP-2315-HE-716	7/16" QC Hex	680 ft-lbs	7-1/2"	6.2 lbs	1/4"	3/8"	4.2 cfm



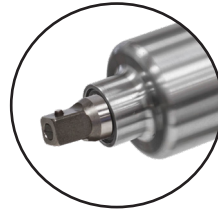


500SS

## 500SS

### 1/2" Square Drive Stainless Steel Impact Wrenches

Offers one of the industry's highest power-to-weight ratios. Features a stainless steel hammer case, cylinder, inlet bushings, throttle components and a twin hammer design for increased durability. Constructed with non-corrosive materials for prolonged field life.



500SS-P  
Pin-Type



500SS-2  
2" Extension

Model	Drive	Max Torque Forward	Max Torque Reverse	Length	Weight	Air Inlet Thread	Rec'd Hose Size	Avg. Air Consumption
500SS	1/2" Friction Ring	700 ft-lbs	700 ft-lbs	7-1/2"	6.2 lbs	1/4"	3/8"	22 cfm
500SS-P	1/2" Pin-Type	700 ft-lbs	700 ft-lbs	7-1/2"	6.2 lbs	1/4"	3/8"	22 cfm
500SS-2	1/2" Friction Ring with 2" Extension	700 ft-lbs	700 ft-lbs	9-1/2"	6.4 lbs	1/4"	3/8"	22 cfm



Call Today to Order • 800-521-8104

7-9



# 750SS



**750SS**  
3/4" Impact Wrench



**751SS**  
1" Impact Wrench



**754SS**  
#4 Spline Drive Impact Wrench

## 750 Series Stainless Steel Impact Wrenches

The 750SS Series Impact offers the highest power-to-weight ratio in a 3/4" impact. Featuring stainless steel hammer case and throttle components for use in corrosive environments. The inevitable water and debris that is found in compressed air systems is no match for the stainless steel throttle parts and motor design. The combination of the bronze end plates and stainless steel cylinder prevents the 750SS series tools from becoming seized after sitting for a nominal period of time with condensation in the motor chamber. The dual retainer design on the 3/4" square and 1" square drive anvils provides the operator with socket retainer options. The twin hammer design, in conjunction with tight motor tolerances, delivers extreme torque. Made in the USA.



**750SS-DH**  
Optional Dead Handle



**750SS-HGR**  
Optional Hanger



Model	Drive	Max Torque Forward	Max Torque Reverse	Length	Weight	Air Inlet Thread	Rec'd Hose Size	Avg. Air Consumption
750SS	3/4" Dual Retainer	1800 ft-lbs	2000 ft-lbs	9"	13.5 lbs	3/8"	1/2"	58 cfm
751SS	1" Dual Retainer	1800 ft-lbs	2000 ft-lbs	9"	13.5 lbs	3/8"	1/2"	58 cfm
754SS	#4 Spline	1800 ft-lbs	2000 ft-lbs	9"	13.5 lbs	3/8"	1/2"	58 cfm





MP-2660



MP-2660-6

## 2660 Series

### 3/4" Square Drive Impact Wrenches

Features friction ring and through-hole dual socket retention, and an optional 3-position bail attachment. The durable steel hammer case and aluminum body make it ideal for the harsh rental, heavy industrial and petrochemical industries. The MP-2660-6 has a 6" extended anvil. 2660-HGR 3-Position Bail/Hanger also available.

Model	Drive	Max Torque	Length	Weight	Air Inlet Thread	Rec'd Hose Size	Avg. Air Consumption
MP-2660	3/4" Dual Retainer	1100 ft-lbs	9"	9.5 lbs	3/8"	1/2"	14-38 cfm
MP-2660-6	3/4" Dual Retainer with 6" Extension	1100 ft-lbs	15"	10.5 lbs	3/8"	1/2"	14-38 cfm



2660-HGR  
Optional  
Hanger



## MP-2006-ST

### 3/4" Square Drive Impact Wrench

Features a friction ring anvil for quick socket changing and a twin hammer design built for power and durability. The balanced design, comfortable grip handle, and low noise combine to reduce operator fatigue. Features a three position power regulator built-in.

Drive	Max Torque	Length	Weight	Air Inlet Thread	Rec'd Hose Size	Avg. Air Consumption
3/4" Friction Ring	950 ft-lbs	8-1/2"	11.2 lbs	3/8"	1/2"	6 cfm



MP-6060

## 6060 Series

### 3/4" & 1" Square Drive Impact Wrenches

Features a durable two jaw clutch for a higher power-to-weight ratio, a pressure-fed clutch lubrication system, two-piece aluminum motor housing for easy maintenance, integrated muffler for low noise, and direct drive for fast run down. Model MP-6060-FR with a 3/4" friction ring anvil also available.

Model	Drive	Max Torque	Length	Weight	Air Inlet Thread	Rec'd Hose Size	Avg. Air Consumption
MP-6060	3/4" Through-Hole	1000 ft-lbs	8-5/8"	11.6 lbs	3/8"	1/2"	35 cfm
MP-6060-1	1" Through-Hole	1100 ft-lbs	8-7/8"	11.6 lbs	3/8"	1/2"	35 cfm



## MP-5447P-ST

### 1" Square Drive Impact Wrench

Features a powerful twin hammer clutch, lightweight composite motor housing, and durable aluminum hammer case. The handle exhaust results in low operation noise, and the push-button fwd/rev control makes it easy to operate. Ideal for industrial maintenance shops and heavy vehicle maintenance and repair.

Drive	Max Torque	Length	Weight	Air Inlet Thread	Rec'd Hose Size	Avg. Air Consumption
1" Dual Retainer	1500 ft-lbs	8-13/16"	7.5 lbs	3/8"	1/2"	7 cfm



**MP-2880**

**1" Square Drive Impact Wrench**

Offers power and convenience at an affordable price. This heavy-duty, hard-hitting, pistol grip impact is perfect for bridge work, truck and tire repair, as well as large capacity general maintenance. Features a 1" square drive anvil with friction ring and through-hole dual socket retention.

Drive	Max Torque	Length	Weight	Air Inlet Thread	Rec'd Hose Size	Avg. Air Consumption
1" Dual Retainer	1200 ft-lbs	10-1/2"	12.5 lbs	3/8"	1/2"	47 cfm



**MP-4740-ST-A**

**1" Square Drive Impact Wrench**

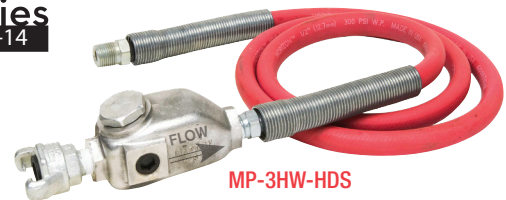
Features friction ring and through-hole dual socket retention. Heavy-duty design with a powerful twin hammer clutch. Ideal for tractor trailer and heavy equipment maintenance and repair.

Drive	Max Torque	Length	Weight	Air Inlet Thread	Rec'd Hose Size	Avg. Air Consumption
1" Dual Retainer	1800 ft-lbs	9-3/4"	13.9 lbs	1/2"	1/2"	10 cfm

**Whip Hoses**

**1/2" Lubricator Whip Hose Assemblies**

Model	Assembly Components			Air Flow @ 70 PSI
	Fitting to Tool	Hose	Lubricator	
MP-2HW-HDS	3/8" MPT	1/2" ID x 6 ft	0-R w/CP Fitting	30 cfm
MP-3HW-HDS	1/2" MPT			



**1/2" Black Hydraulic Whip Hose Assemblies (300 psi)**

Model	Assembly Components		
	Integral Swivel Fitting	Hose	Lubricator
2HW-HYD-OLF	3/8" MPT	1/2" ID x 6 ft	OL-F CP Fitting
3HW-HYD-OLF	1/2" MPT		



**Industrial Grade Air Hoses - with Fittings**

- Maximum pressures 200/250/300 psi
- Heavy-duty double strand
- High tensile rayon cord
- Tough neoprene
- Oil resistant



Model	Hose ID	Hose OD	Length	Max. PSI	Fittings
AH-5	3/4"	1-5/32"	50 ft	300 psi	CP Fittings

Other sizes also available. All air hoses are industrial grade construction.

**Air Tool Oil**

A specially formulated high grade lubricating oil for all piston and rotary-type air tools. Lubricates and rustproofs for longer tool life.

- OIL-080** – 4 Ounce (12 per case)
- OIL-085** – 1 Quart (6 per case)
- OIL-014** – 1 Gallon (4 per case)





## 6100 Series

### 1" Square Drive Impact Wrenches

Features a through-hole anvil for positive socket retention and brass end plates for longer tool life. Ideal for demanding applications and heavy assembly work. Efficient, heavy-duty clutch provides fast run down and high torque output.



MP-6100



MP-6100TA



#5 Spline



MP-6100I  
Inside Trigger



6" Extension

Model	Drive	Handle Type	Max Torque	Length	Weight	Air Inlet Thread	Rec'd Hose Size	Avg. Air Consumption
MP-6100	1" Through-Hole	Outside Trigger	1440 ft-lbs	14-1/2"	20 lbs	1/2"	1/2"	17.7 cfm
MP-6100I	1" Through-Hole	Inside Trigger	1440 ft-lbs	14-1/2"	20 lbs	1/2"	1/2"	17.7 cfm
MP-6100-5SPLN	#5 Spline	Outside Trigger	1440 ft-lbs	14-1/2"	20 lbs	1/2"	1/2"	17.7 cfm
MP-6100I-5SPLN	#5 Spline	Inside Trigger	1440 ft-lbs	14-1/2"	20 lbs	1/2"	1/2"	17.7 cfm
MP-6100TA	1" Through-Hole	Outside Trigger	1400 ft-lbs	16-11/16"	23.5 lbs	1/2"	1/2"	17.7 cfm
MP-6100TA-5SPLN	#5 Spline	Outside Trigger	1400 ft-lbs	17-1/16"	23.7 lbs	1/2"	1/2"	17.7 cfm
MP-6100G6	1" Through-Hole with 6" Extension	Outside Trigger	1440 ft-lbs	20"	23 lbs	1/2"	1/2"	17.7 cfm
MP-6100I6	1" Through-Hole with 6" Extension	Inside Trigger	1440 ft-lbs	20"	23 lbs	1/2"	1/2"	17.7 cfm
MP-6100TA6	1" Through-Hole with 6" Extension	Outside Trigger	1400 ft-lbs	22"	24 lbs	1/2"	1/2"	17.7 cfm

### Don't Forget Your Essential Air Tool Gear!

- High-Wear & Consumable Parts
- Air Tool Oil & In-Line Lubricators
- Air Hoses & Whip Hose Assemblies
- Portable FRL's & Moisture Separators
- Safety Lock Cables & Clips



Air Movers  
(Page 17-5)



Portable FRL's  
(Page 17-4)



Portable Moisture Separator  
(Page 17-3)

**Accessories**  
Pages 18-5 - 18-14

Call Today to Order • 800-521-8104

7-13





MP-2934B2



MP-2940B2

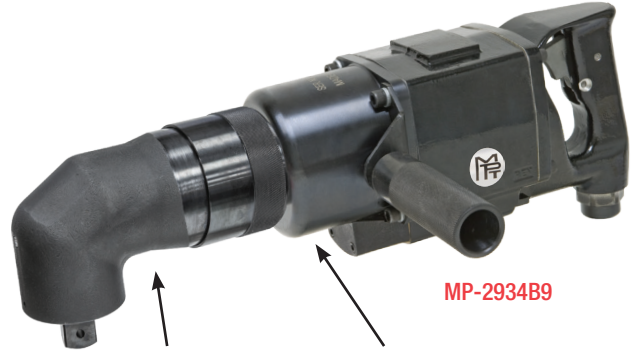


MP-2950B7

## 2900 Series

### Heavy-Duty Square Drive Impact Wrenches

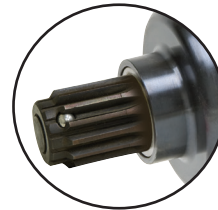
Features a twin hammer clutch mechanism for high power-to-weight ratio, a pressure-fed clutch lubrication system, two-piece motor housing for easy maintenance, a built-in muffler for low noise, and direct drive for fast run down.



MP-2934B9

Part No. 2934A90  
Angle Attachment Assembly

Part No. 2934-A827  
Hammer Case Assembly



Optional #5 Spline Anvil



Optional Outside Trigger

Model	Drive	Handle Type	Max Torque	Length	Weight	Air Inlet Thread	Rec'd Hose Size	Avg. Air Consumption
MP-2934B9	1" Through-Hole	Inside Trigger	750 ft-lbs	18-5/8"	35.75 lbs	1/2"	3/4"	47 cfm
MP-2934B1	#5 Spline	Inside Trigger	1500 ft-lbs	11-1/4"	19 lbs	1/2"	3/4"	47 cfm
MP-2934B2	1" Through-Hole	Inside Trigger	1500 ft-lbs	11-1/4"	19 lbs	1/2"	3/4"	47 cfm
MP-2934A1	#5 Spline	Outside Trigger	1500 ft-lbs	11-1/4"	19 lbs	1/2"	3/4"	47 cfm
MP-2934A2	1" Through-Hole	Outside Trigger	1500 ft-lbs	11-1/4"	19 lbs	1/2"	3/4"	47 cfm
MP-2940B1	#5 Spline	Inside Trigger	2000 ft-lbs	12-13/32"	24 lbs	1/2"	3/4"	58 cfm
MP-2940B2	1" Through-Hole	Inside Trigger	2000 ft-lbs	12-13/32"	24 lbs	1/2"	3/4"	58 cfm
MP-2940A1	#5 Spline	Outside Trigger	2000 ft-lbs	12-13/32"	24 lbs	1/2"	3/4"	58 cfm
MP-2940A2	1" Through-Hole	Outside Trigger	2000 ft-lbs	12-13/32"	24 lbs	1/2"	3/4"	58 cfm
MP-2942B1	#5 Spline	Inside Trigger	2700 ft-lbs	12-1/4"	24 lbs	1/2"	3/4"	58 cfm
MP-2942B2	1" Through-Hole	Inside Trigger	2700 ft-lbs	12-1/4"	24 lbs	1/2"	3/4"	58 cfm
MP-2950B1	#5 Spline	Inside Trigger	3000 ft-lbs	14-1/2"	33 lbs	1/2"	3/4"	70 cfm
MP-2950B7	1-1/2" Through-Hole	Inside Trigger	3000 ft-lbs	14-1/2"	33 lbs	1/2"	3/4"	70 cfm
MP-2950A1	#5 Spline	Outside Trigger	3000 ft-lbs	14-1/2"	33 lbs	1/2"	3/4"	70 cfm
MP-2950A7	1-1/2" Through-Hole	Outside Trigger	3000 ft-lbs	14-1/2"	33 lbs	1/2"	3/4"	70 cfm



4920B3



Optional #5 Spline Anvil



Optional Outside Trigger

## 4920 Series Mini Square Drive Impact Wrenches

The 4900 Series of Super-Duty Impacts are engineered and built to withstand the most demanding industrial applications. The compact and lightweight design is ideal for steel erection and other heavy industrial applications found in the petrochemical, mining and power generation industries.

Featuring bronze end plates and corrosion resistant internal components for maximum durability. It is driven by a single jumbo hammer clutch with a pressure-fed lubrication system. The 4900 Series Impacts come standard with steel F/R lever, throttle lever and knurled dead handle.

Model	Drive	Handle Type	Max Torque	Length	Weight	Air Inlet Thread	Rec'd Hose Size	Avg. Air Consumption
4920B1	#5 Spline	Inside Trigger	1960 ft-lbs	12-3/4"	15.4 lbs	1/2"	3/4"	65 cfm
4920B3	1" Through-Hole	Inside Trigger	1960 ft-lbs	12-1/4"	13.56 lbs	1/2"	3/4"	65 cfm
4920A1	#5 Spline	Outside Trigger	1960 ft-lbs	12-3/4"	15.4 lbs	1/2"	3/4"	65 cfm
4920A3	1" Through-Hole	Outside Trigger	1960 ft-lbs	12-1/4"	13.56 lbs	1/2"	3/4"	65 cfm

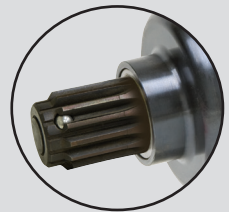


4942B2

## 4900 Series Super-Duty Square Drive Impact Wrenches

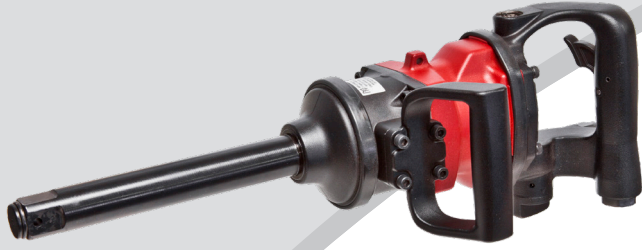
Super-duty impacts are engineered and built to withstand the most demanding industrial applications. Featuring bronze end plates, twin hammer clutch, pressure-fed lubrication system and corrosion-resistant internal components for maximum durability.

The impact wrenches come standard with steel fwd/rev lever, throttle lever and knurled dead handle. Ideal for the heavy industrial applications found in the petrochemical, steel erection, mining and power generation industries.



Optional #5 Spline Anvil

Model	Drive	Handle Type	Max Torque	Length	Weight	Air Inlet Thread	Rec'd Hose Size	Avg. Air Consumption
4940B1	#5 Spline	Inside Trigger	2800 ft-lbs	13"	21.5 lbs	1/2"	3/4"	70 cfm
4940B2	1" Through-Hole	Inside Trigger	2800 ft-lbs	13"	21.5 lbs	1/2"	3/4"	70 cfm
4942B1	#5 Spline	Inside Trigger	3300 ft-lbs	14"	24.64 lbs	1/2"	3/4"	75 cfm
4942B2	1" Through-Hole	Inside Trigger	3300 ft-lbs	14"	24.64 lbs	1/2"	3/4"	75 cfm
4955B1	#5 Spline	Inside Trigger	4200 ft-lbs	16-1/2"	35.5 lbs	1/2"	3/4"	90 cfm
4955B2	1-1/2" Through-Hole	Inside Trigger	4200 ft-lbs	16-1/2"	35.5 lbs	1/2"	3/4"	90 cfm



### MP-3740L-ST-A

#### 1" Square Drive Impact Wrench

Features a combination friction ring and through-hole anvil. Heavy-duty 8-1/4" extended anvil high torque impact is ideal for use on truck wheels with recessed rims. Ergonomic angled handles for operator comfort.

Drive	Max Torque	Length	Weight	Air Inlet Thread	Rec'd Hose Size	Avg. Air Consumption
1" Dual Retainer with 8-1/4" Extension	1800 ft-lbs	19-3/8"	16.5 lbs	1/2"	1/2"	10 cfm



MP-2740-ST

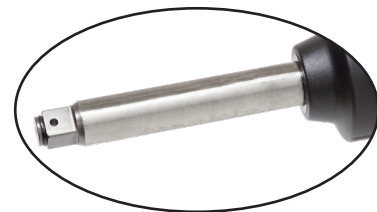
### 2740 Series

#### 1" Square Drive Impact Wrenches

Features a combination friction ring and through-hole anvil. Heavy-duty 1" impact allows fast run down and high torque. Ideal for shipyards, bridge building, and heavy manufacturing plants.



MP-2740-ST-6



MP-2740-ST-8

Model	Drive	Max Torque	Length	Weight	Air Inlet Thread	Rec'd Hose Size	Avg. Air Consumption
MP-2740-ST	1" Dual Retainer	2500 ft-lbs	16-3/16"	22 lbs	1/2"	1/2"	10 cfm
MP-2740-ST-6	1" Dual Retainer with 6" Extension	2500 ft-lbs	22-3/16"	23.9 lbs	1/2"	1/2"	10 cfm
MP-2740-ST-8	1" Dual Retainer with 8" Extension	2500 ft-lbs	24-3/16"	24.9 lbs	1/2"	1/2"	10 cfm





## Heavy-Duty Square Drive Impact Wrenches

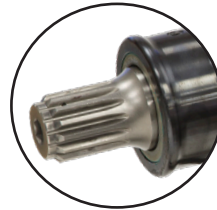
Features a high energy-per-blow two jaw clutch for a high power-to-weight ratio. The rugged steel clutch housing is machined from bar stock, bronze alloy end plates provide long motor life, and a three-piece housing allows for easy maintenance. Ideal for steel erection and bolting applications.



MP-611-ITSQDR



MP-6120-ITSQDR



Optional #5 Spline Anvil



Optional Outside Trigger  
(not available on Pistol Grip)

Model	Drive	Handle Type	Max Torque	Length	Weight	Air Inlet Thread	Rec'd Hose Size	Avg. Air Consumption
MP-611-ITSPDR	#5 Spline	Inside Trigger	2800 ft-lbs	12-1/2"	22.5 lbs	1/2"	3/4"	47 cfm
MP-611-ITSQDR	1" Through-Hole	Inside Trigger	2800 ft-lbs	12-1/2"	22.5 lbs	1/2"	3/4"	47 cfm
MP-611-OTSPDR	#5 Spline	Outside Trigger	2800 ft-lbs	12-1/2"	22.5 lbs	1/2"	3/4"	47 cfm
MP-611-OTSQDR	1" Through-Hole	Outside Trigger	2800 ft-lbs	12-1/2"	22.5 lbs	1/2"	3/4"	47 cfm
MP-6120-ITSPDR	#5 Spline	Inside Trigger	3500 ft-lbs	14-3/4"	33.75 lbs	1/2"	3/4"	70 cfm
MP-6120-ITSQDR	1-1/2" Through-Hole	Inside Trigger	3500 ft-lbs	14-3/4"	33.75 lbs	1/2"	3/4"	70 cfm
MP-6120-OTSPDR	#5 Spline	Outside Trigger	3500 ft-lbs	14-3/4"	33.75 lbs	1/2"	3/4"	70 cfm
MP-6120-OTSQDR	1-1/2" Through-Hole	Outside Trigger	3500 ft-lbs	14-3/4"	33.75 lbs	1/2"	3/4"	70 cfm



## MP-5000N Series 1-1/2" Square Drive Heavy-Duty Impact Wrench

Features the "N" Series clutch for hard joints. Ideal for bridges, steel erection, wind energy, turbine work and maintenance of construction machinery. Features inside trigger "D" handle, dead handle and aluminum housing for weight reduction. Available with optional #5 Spline Anvil MP-5000N-5S.

Model	Drive	Handle Type	Max Torque	Length	Weight	Air Inlet Thread	Rec'd Hose Size	Avg. Air Consumption
MP-5000N	1-1/2" Through-Hole	Inside Trigger	2590 ft-lbs	17-3/8"	35 lbs	1/2"	1/2"	28.9 cfm
MP-5000N-5S	#5 Spline	Inside Trigger	2590 ft-lbs	17-3/8"	35 lbs	1/2"	1/2"	28.9 cfm

Call Today to Order • 800-521-8104

7-17

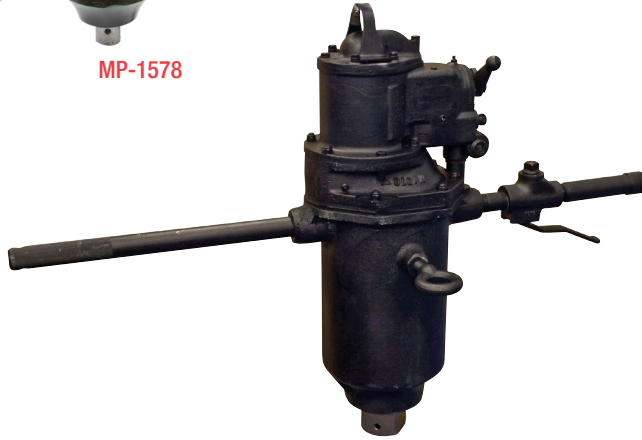


**Extra Heavy-Duty**  
**1-1/2", 2-1/2", 3-1/2" Square Drive Impact Wrenches**

Features a through-hole anvil. Designed to produce an exceptionally high torque output with ball and cam hammer mechanism. Ideal for demanding applications in shipyards, bridge construction, building construction, stud installation, stud removal, rental industry and heavy manufacturing plants. Time-tested design for maximum durability.



**MP-1578**



**MP-2588**



**MP-3599**

Models	Drive	Max Torque	Length	Weight	Air Inlet Thread	Rec'd Hose Size	Avg. Air Consumption
MP-1578	1-1/2" Through-Hole	10,000 ft-lbs	23"	86 lbs	3/4"	1"	138 cfm
MP-2588	2-1/2" Through-Hole	50,000 ft-lbs	25-3/8"	215 lbs	1"	1"	155 cfm
MP-3599	3-1/2" Through-Hole	80,000 ft-lbs	37-1/2"	600 lbs	1-1/4"	1-1/4"	375 cfm



Impact Wrenches



## Tune Up Kits

Available for Most Industrial Models!



MPT Models	Kit No.
MP-212-PT	212PT-TK
MP-2142QR	2142QR-TK2
MP-1437RA	1450RA-TK2
MP-1450RA	1450RA-TK2
MP-2144QR	2144QR-TK2
MP-2144QR-P	2144QR-TK2
MP-2144QR-2	2144QR-TK2
MP-2146QR	2146QR-TK2
MP-2146QR-6	2146QR-TK2
MP-2148QR	2148QR-TK2
MP-1700	1700-TK2
MP-1700PA	1700-TK2
MP-1700P2	1700-TK2
MP-2315HE-716	2315-TK2
MP-2315HE	2315-TK2
MP-2315HE-2	2315-TK2
750SS	750SS-TK2
751SS	750SS-TK2
754SS	750SS-TK2
MP-2660	2660-TK2
MP-2660-6	2660-TK2
MP-2660UD	2660UD-TK2
MP-6060	C137568
MP-6060-1	C137568
MP-2934B9	2934-TK3
MP-2934B1	2934-TK3
MP-2934B2	2934-TK3
MP-2934A1	2934-TK3

MPT Models	Kit No.
MP-2934A2	2934-TK3
MP-2940B1	2940-TK3
MP-2940B2	2940-TK3
MP-2940A1	2940-TK3
MP-2940A2	2940-TK3
MP-2950B1	2950-TK2
MP-2950B7	2950-TK2
MP-2950A1	2950-TK2
MP-2950A7	2950-TK2
4920B3	4920S-TK
4940B1	4940-TK
4940B2	4940-TK
4942B1	4942-TK
4942B2	4942-TK
4955B1	4955-TK
4955B2	4955-TK
MP-2740-ST	2740-TK1
MP-611-ITSPDR	C115811
MP-611-ITSQDR	C115811
MP-611-OTSPDR	C115811
MP-611-OTSQDR	C115811
MP-796	C115811
MP-796-5S	C115811
MP-6120-ITSPDR	C101987
MP-6120-ITSQDR	C101987
MP-6120-OTSPDR	C101987
MP-6120-OTSQDR	C101987

Other Models	Kit No.
IR-2920P	2920-TK2
IR-2925P	2925-TK2
IR-2934	2934-TK3
IR-2940	2940-TK3
IR-3940	3940-TK1
IR-3942	3942-TK1
IR-2945	2945-TK2
IR-2950	2950-TK2
CP-6060	C137568
CP-0611	C115811
CP-0610	C101089
CP-6120	C101987
IR-261	261-TK2
IR-2235	2235-TK1
IR-2141	2141-TK1
IR-2945	2945-TK2
IR-1720P	1720P-TK2
IR-3955	3955-TK1

Call for other models not listed.

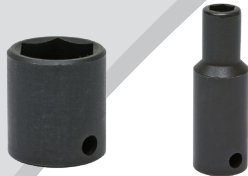
Call Today to Order • 800-521-8104

7-19



### 3/8" Sq. Drive - 6 Point Hex

Size	Standard	Deep
5/16"	3810	3910
3/8"	3812	3912
7/16"	3814	3914
1/2"	3816	3916
9/16"	3818	3918
5/8"	3820	3920
11/16"	3822	3922
3/4"	3824	3924



### 3/8" Sq. Drive - 6 Point Hex, Metric

Size	Standard	Deep
6mm	38-06mm	39-06mm
7mm	38-07mm	39-07mm
8mm	38-08mm	39-08mm
9mm	38-09mm	39-09mm
10mm	38-10mm	39-10mm
11mm	38-11mm	39-11mm
12mm	38-12mm	39-12mm
13mm	38-13mm	39-13mm
14mm	38-14mm	39-14mm
15mm	38-15mm	39-15mm
16mm	38-16mm	39-16mm
17mm	38-17mm	39-17mm
18mm	38-18mm	39-18mm
19mm	38-19mm	39-19mm



### 1/2" Sq. Drive - 6 Point Hex

Size	Standard	Deep
3/8"	4812	4912
7/16"	4814	4914
1/2"	4816	4916
9/16"	4818	4918
5/8"	4820	4920
11/16"	4822	4922
3/4"	4824	4924
13/16"	4826	4926
7/8"	4828	4928
15/16"	4830	4930
1"	4832	4932
1-1/16"	4834	4934
1-1/8"	4836	4936
1-3/16"	4838	4938
1-1/4"	4840	4940
1-5/16"	4842	4942
1-3/8"	4844	4944
1-7/16"	4846	4946
1-1/2"	4848	4948

### 1/2" Sq. Drive - 6 Point Hex, Metric

Size	Standard	Deep
10mm	48-10mm	49-10mm
11mm	48-11mm	49-11mm
12mm	48-12mm	49-12mm
13mm	48-13mm	49-13mm
14mm	48-14mm	49-14mm
15mm	48-15mm	49-15mm
16mm	48-16mm	49-16mm
17mm	48-17mm	49-17mm
18mm	48-18mm	49-18mm
19mm	48-19mm	49-19mm
20mm	48-20mm	49-20mm
21mm	48-21mm	49-21mm
22mm	48-22mm	49-22mm
23mm	48-23mm	49-23mm
24mm	48-24mm	49-24mm
25mm	48-25mm	-
26mm	48-26mm	-
27mm	48-27mm	49-27mm
28mm	48-28mm	-
29mm	-	49-29mm
30mm	48-30mm	49-30mm
32mm	48-32mm	49-32mm
34mm	-	49-34mm
35mm	-	49-35mm
36mm	48-36mm	49-36mm



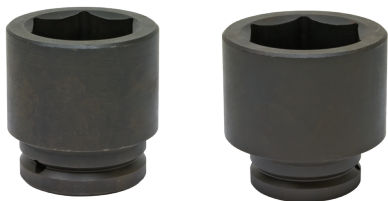
### 3/4" Sq. Drive - 6 Point Hex

Size	Standard	Deep
9/16"	6818	6918
5/8"	6820	6920
11/16"	6822	6922
3/4"	6824	6924
13/16"	6826	6926
7/8"	6828	6928
15/16"	6830	6930
1"	6832	6932
1-1/16"	6834	6934
1-1/8"	6836	6936
1-3/16"	6838	6938
1-1/4"	6840	6940
1-5/16"	6842	6942
1-3/8"	6844	6944
1-7/16"	6846	6946
1-1/2"	6848	6948
1-9/16"	6850	6950
1-5/8"	6852	6952
1-11/16"	6854	6954
1-3/4"	6856	6956
1-13/16"	6858	6958
1-7/8"	6860	6960
1-15/16"	6862	6962
2"	6864	6964
2-1/16"	6890	-
2-1/8"	6892	6968
2-3/16"	6894	-
2-1/4"	6896	-
2-3/8"	6898	-



### 1" Sq. Drive - 6 Point Hex

Size	Standard	Deep
3/4"	8824	8924
13/16"	8826	8926
7/8"	8828	8928
15/16"	8830	8930
1"	8832	8932
1-1/16"	8834	8933
1-1/8"	8836	8936
1-3/16"	8838	8938
1-1/4"	8840	8939
1-5/16"	8842	8942
1-3/8"	8844	8944
1-7/16"	8846	8946
1-1/2"	8848	8948
1-9/16"	8850	8950
1-5/8"	8852	8952
1-11/16"	8854	8954
1-3/4"	8856	8956
1-13/16"	8858	8958
1-7/8"	8860	8960
1-15/16"	8862	8962
2"	8864	8964
2-1/16"	8866	8966
2-1/8"	8868	8968
2-3/16"	8870	8970
2-1/4"	8872	8972
2-5/16"	8874	8974
2-3/8"	8876	8976
2-7/16"	8878	-
2-1/2"	8880	-
2-9/16"	8882	8981
2-5/8"	8884	-
2-11/16"	8886	-
2-3/4"	8888	8988
2-13/16"	8890	-
2-7/8"	8892	-
2-15/16"	8894	-
3"	8896	-
3-1/8"	8897	-
3-1/4"	8897A	-
3-3/8"	8898	-
3-1/2"	8899	-
3-5/8"	88116	-
3-7/8"	88124	-
4"	88128	-
4-1/8"	88132	-
4-1/4"	88136	-
4-1/2"	88144	-



### 1-1/2" Sq. Drive - 6 Point Hex

Size	Standard	Deep
1-3/8"	84822	84922
1-7/16"	84823	84923
1-1/2"	84824	84924
1-9/16"	84825	84925
1-5/8"	84826	84926
1-11/16"	84827	84927
1-3/4"	84828	84928
1-13/16"	84829	84929
1-7/8"	84830	84930
1-15/16"	84831	84931
2"	84832	84932
2-1/16"	84833	84933
2-1/8"	84834	84934
2-3/16"	84835	84935
2-1/4"	84836	84936
2-5/16"	84837	84937
2-3/8"	84838	84938
2-7/16"	84839	84939
2-1/2"	84840	84940
2-9/16"	84841	84941
2-5/8"	84842	84942
2-11/16"	84843	84943
2-3/4"	84844	84944
2-13/16"	84845	84945
2-7/8"	84846	84946
2-15/16"	84847	84947
3"	84848	84948
3-1/16"	84849	84949
3-1/8"	84850	84950
3-3/16"	84851	84951
3-1/4"	84852	84952
3-5/16"	84853	84953
3-3/8"	84854	84954
3-7/16"	84855	84955
3-1/2"	84856	84956
3-9/16"	84857	84957
3-5/8"	84858	84958
3-11/16"	84859	84959
3-3/4"	84860	84960
3-13/16"	84861	84961
3-7/8"	84862	84962
3-15/16"	84863	84963
4"	84864	84964
4-1/16"	84865	84965
4-1/8"	84866	84966
4-3/16"	84867	84967
4-1/4"	84868	84968
4-5/16"	84869	84969
4-3/8"	84870	84970
4-7/16"	84871	84971
4-1/2"	84872	84972
4-5/8"	84874	84974
4-3/4"	84876	84976

### #5 Spline Drive - 6 Point Hex

Size	Standard	Deep
7/8"	5828	-
15/16"	5830	-
1"	5832	-
1-1/16"	5834	5934
1-1/8"	5836	5936
1-3/16"	5838	5938
1-1/4"	5840	5940
1-5/16"	5842	5942
1-3/8"	5844	-
1-7/16"	5846	5946
1-1/2"	5848	5948
1-5/8"	5852	-
1-3/4"	5856	-
1-13/16"	5858	-
1-7/8"	5860	-
2"	5864	-
2-1/8"	29534	-



### 2-1/2" Sq. Drive - 6 Point Hex

Size	Standard
1-3/4"	85814
1-7/8"	85815
2"	85816
2-1/8"	85817
2-1/4"	85818
2-3/8"	85819
2-9/16"	85820A
2-5/8"	85821
2-3/4"	85822
2-15/16"	85823
3"	85824
3-1/8"	85825
3-1/4"	85826
3-3/8"	85827
3-1/2"	85828
3-5/8"	85829
3-3/4"	85830
3-7/8"	85831
4"	85832
4-1/8"	85833
4-1/4"	85834
4-3/8"	85835
4-1/2"	85836
4-5/8"	85837
4-3/4"	85838
4-7/8"	85839
5"	85840
5-1/8"	85841
5-1/4"	85842
5-3/8"	85843
5-1/2"	85844
5-5/8"	85845
5-3/4"	85846
6-1/8"	85849
6-1/2"	85852
6-3/4"	85854
6-7/8"	85855
7-5/8"	85861
8"	85864



### Extension Bars

Female Sq Dr	Male Sq Dr	Part No.
3/8"	1/2"	3899
1/2"	3/8"	4900
1/2"	5/8"	A0810
1/2"	3/4"	4902
5/8"	1/2"	A1008
5/8"	3/4"	A1012
3/4"	1/2"	6900
3/4"	5/8"	A1210
3/4"	1"	6901
1"	3/4"	8900
1"	1-1/2"	8902
1"	#5 Spline	A1695
1-1/2"	1"	84900
1-1/2"	#5 Spline	A2495
#5 Spline	1"	5901
#5 Spline	1-1/2"	A9524



### Extension Bars

Square Dr	Length	Part No.
3/8"	3"	3903
3/8"	6"	3906
1/2"	2"	4903
1/2"	5"	4905
1/2"	10"	4909
5/8"	7-1/2"	7185P
3/4"	7"	6907
3/4"	10"	6910
3/4"	13"	6913
1"	7"	8907
1"	10"	8910
1"	13"	8913
1"	4"	E1604
1-1/2"	8"	84908
1-1/2"	12"	84912
1-1/2"	15"	84915

Call Today to Order • 800-521-8104

7-21

Impact Wrench Sockets & Ext Bars

## Impact Wrench Drill Chuck

Designed for use on standard impact tools.

Model	Description
1012C	1/2" Square Drive to 1/2" Chuck
1014C	3/8" Square Drive to 3/8" Chuck



## Hex Drive Shank Adapters



Converts slip chuck to square drive

Hex Drive	Sq. Drive	Length	Part No.
1/4"	1/4"	2"	250SH14-2
	1/4"	4"	250SH14-4
	1/4"	6"	250SH14-6
	3/8"	2"	250SH38-2
7/16"	3/8"	3"	437SH38-3
	3/8"	5"	437SH38-5
	1/2"	3"	437SH12-3
	1/2"	4"	437SH12-4
5/8"	1/2"	3"	EX502-3
	1/2"	5"	EX502-5
	5/8"	3"	7151-3
	5/8"	6"	7152-6
	3/4"	3"	EX758-3
	3/4"	5"	EX758-5

Other sizes and lengths available.

## Universal Joints

Drive	Part No.
3/8"	3800
1/2"	4800
5/8"	U1010
3/4"	6800
1"	8800
1-1/2"	U2424
#5 Spline	U9595

